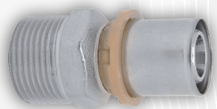


ICMA



Profilo TH



07568 RACCORDO DIRITTO MASCHIO A PRESSARE PER TUBO MULTISTRATO ICMA

CODICE	VARIANTE	COD.PROD.	U.M.	M.V.	CF	LISTINO
0756802	Ø16 x 1/2"	81402ADGH06	PZ	1	50	3,2681
0756804	Ø20 x 1/2"	81402ADBQ06	PZ	1	50	4,1894
0756806	Ø20 x 3/4"	81402AEBQ06	PZ	1	40	5,0331
0756808	Ø26 x 3/4"	81402AEGP06	PZ	1	40	6,1774
0756810	Ø26 x 1"	81402AFGP06	PZ	1	15	8,4078
0756812	Ø32 x 1"	81402AFGQ06	PZ	1	15	10,3473

ICMA



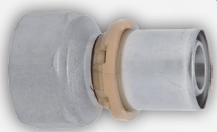
Profilo TH



07570 RACCORDO DIRITTO DOPPIO A PRESSARE PER TUBO MULTISTRATO ICMA

CODICE	VARIANTE	COD.PROD.	U.M.	M.V.	CF	LISTINO
0757016	Ø16 x Ø16	81400GH06	PZ	1	40	4,0827
0757020	Ø20 x Ø20	81400BQ06	PZ	1	35	5,7119
0757026	Ø26 x Ø26	81400GP06	PZ	1	20	8,2624
0757032	Ø32 x Ø32	81400GQ06	PZ	1	15	12,2966

ICMA



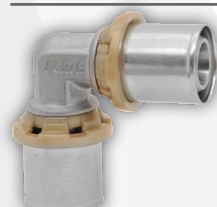
Profilo TH



07572 RACCORDO DIRITTO FEMMINA A PRESSARE PER TUBO MULTISTRATO ICMA

CODICE	VARIANTE	COD.PROD.	U.M.	M.V.	CF	LISTINO
0757202	Ø16 x 1/2"	81401ADGH06	PZ	1	40	2,8996
0757204	Ø20 x 1/2"	81401ADBQ06	PZ	1	40	3,9275
0757206	Ø20 x 3/4"	81401AEBQ06	PZ	1	30	4,6548
0757208	Ø26 x 3/4"	81401AEGP06	PZ	1	15	5,9543
0757210	Ø26 x 1"	81401AFGP06	PZ	1	15	7,1180
0757212	Ø32 x 1"	81401AFGQ06	PZ	1	15	9,0285

ICMA



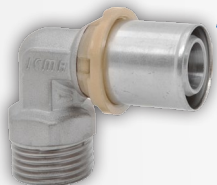
Profilo TH



07574 GOMITO DOPPIO A PRESSARE PER TUBO MULTISTRATO ICMA

CODICE	VARIANTE	COD.PROD.	U.M.	M.V.	CF	LISTINO
0757416	Ø16 x Ø16	81403GH06	PZ	1	30	4,5579
0757420	Ø20 x Ø20	81403BQ06	PZ	1	30	6,4101
0757426	Ø26 x Ø26	81403GP06	PZ	1	15	9,5133
0757432	Ø32 x Ø32	81403GQ06	PZ	1	15	14,1779

ICMA



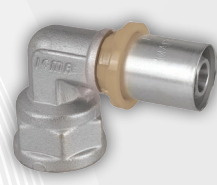
Profilo TH



07576 GOMITO MASCHIO A PRESSARE PER TUBO MULTISTRATO ICMA

CODICE	VARIANTE	COD.PROD.	U.M.	M.V.	CF	LISTINO
0757602	Ø16 x 1/2"	81404ADGH06	PZ	1	30	4,1215
0757604	Ø20 x 1/2"	81404ADBQ06	PZ	1	20	5,2852
0757606	Ø20 x 3/4"	81404AEBQ06	PZ	1	20	6,4392
0757608	Ø26 x 3/4"	81404AEGP06	PZ	1	15	8,2333
0757610	Ø26 x 1"	81404AFGP06	PZ	1	10	10,1437
0757612	Ø32 x 1"	81404AFGQ06	PZ	1	10	13,3342

ICMA



Profilo TH



07578 GOMITO FEMMINA A PRESSARE PER TUBO MULTISTRATO ICMA

CODICE	VARIANTE	COD.PROD.	U.M.	M.V.	CF	LISTINO
0757802	Ø16 x 1/2"	81405ADGH06	PZ	1	30	3,4523
0757804	Ø20 x 1/2"	81405ADBQ06	PZ	1	20	5,1203
0757806	Ø20 x 3/4"	81405AEBQ06	PZ	1	20	6,1192
0757808	Ø26 x 3/4"	81405AEGP06	PZ	1	15	8,1557
0757810	Ø26 x 1"	81405AFGP06	PZ	1	10	9,6103
0757812	Ø32 x 1"	81405AFGQ06	PZ	1	10	13,7027

ICMA



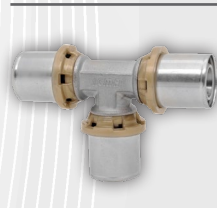
Profilo TH



07580 GOMITO FEMMINA FLANGIATO A PRESSARE TUBO MULTISTRATO ICMA

CODICE	VARIANTE	COD.PROD.	U.M.	M.V.	CF	LISTINO
0758002	Ø16 x 1/2"	81410ADGH06	PZ	1	10	5,7119

ICMA



Profilo TH



07582 TEE DOPPIO A PRESSARE PER TUBO MULTISTRATO ICMA

CODICE	VARIANTE	COD.PROD.	U.M.	M.V.	CF	LISTINO
0758216	Ø16 x Ø16 x Ø16	81406GH06	PZ	1	20	6,8853
0758220	Ø20 x Ø20 x Ø20	81406BQ06	PZ	1	15	9,0770
0758226	Ø26 x Ø26 x Ø26	81406GP06	PZ	1	10	14,0615
0758232	Ø32 x Ø32 x Ø32	81406GQ06	PZ	1	5	19,6667

Raccordi a pressare per tubo multistrato, progettati per essere impiegati sia in impianti per la fornitura di acqua sanitaria che impianti di riscaldamento e raffrescamento. Semplici e veloci da installare. Filettatura ISO 228-1