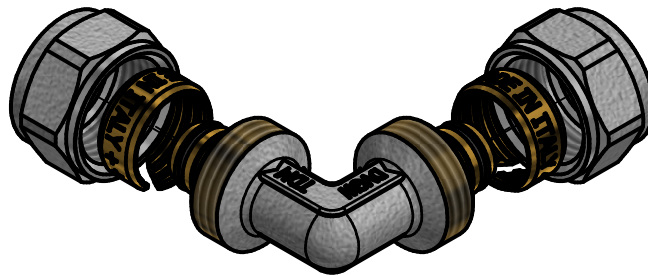
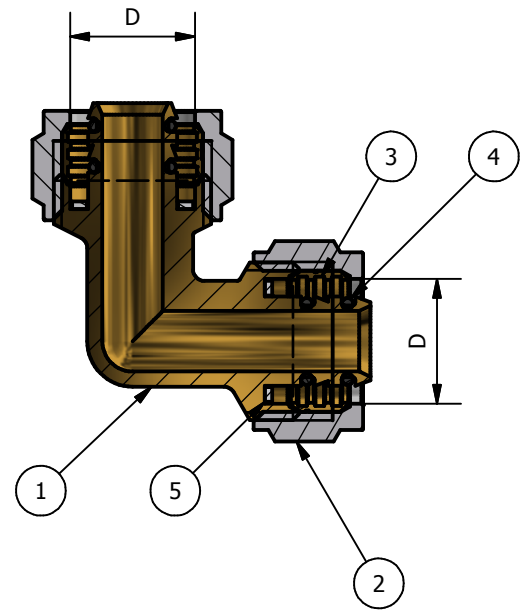
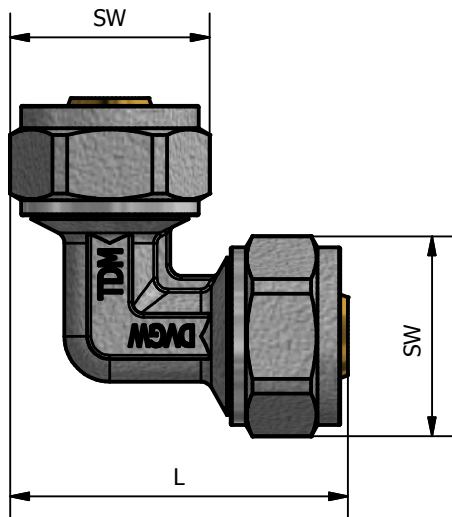


A-A (1 : 1)



TDM CODE	SIZE	L	D1	SW
1065 16	16	44,5	16	24
1065 18	18	48,5	18	27
1065 20	20	51,5	20	30
1065 26	26	63	26	36
1065 32	32	73	32	42

N°	DESCRIPTION	MATERIAL
1	BODY	CW 617N EN12165
2	LOCKING NUT	CW 617N EN12165
3	CUT RING	CW 614N EN12168
4	O-RING	EPDM PEROX 681-1
5	ISOLATOR	P.T.F.E.

CONFORMITY
1) DM 174 6 APRIL 2004
2) UNI EN 10954-2
3) UNI EN 1254-3
4) UNI EN ISO 228-1

WORKING PRESSURE MAX	10 BAR
WORKING TEMPERATURE MIN-MAX	-20°C/110°C

00	Prima emissione	Delaini M.	27/02/2012
Rev.	Nota Revisione	Approvatore	Data Approvazione
Toll Gen:	JS13	Stato sup.:	Giallo Nichelato
Filetto:	ISO 228	Note tecniche:	
Peso lavorato:	Peso grezzo:	N° stampo:	
Materiale:		Disegnatore:	Data: 27/02/2012
		Delaini P.	
TDM Brass s.r.l via Artigiani , 7-9 25030 Maclodio BS Italy tel +39 030 9972217 fax 030 9787089 www.tdmbrass.it email info@tdmbrass.it		 <i>Italian Fittings</i>	

Codice: 1065 scheda

Descrizione: Double elbow fitting